

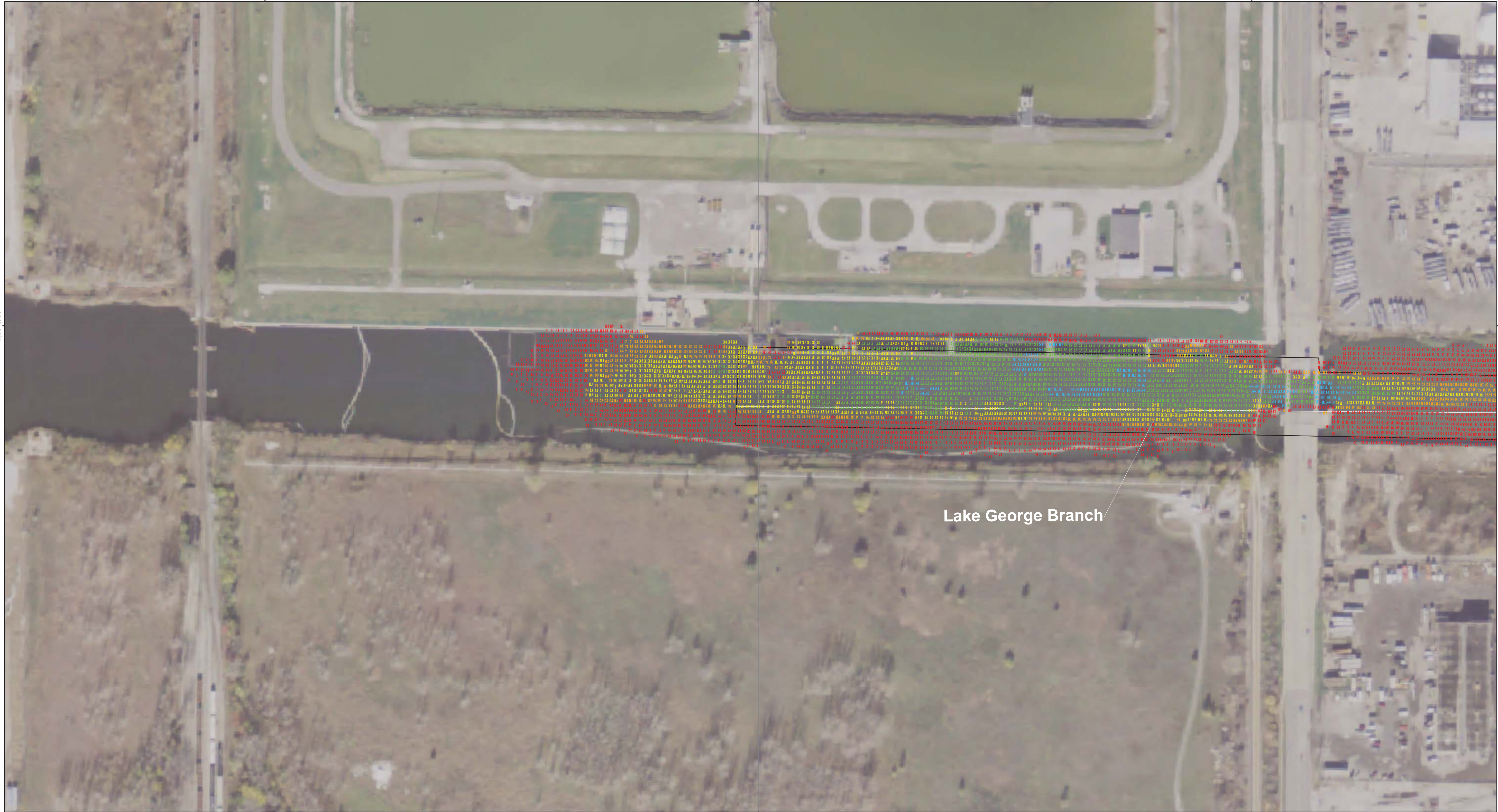
2,842,000

2,843,000

2,844,000

2,331,000

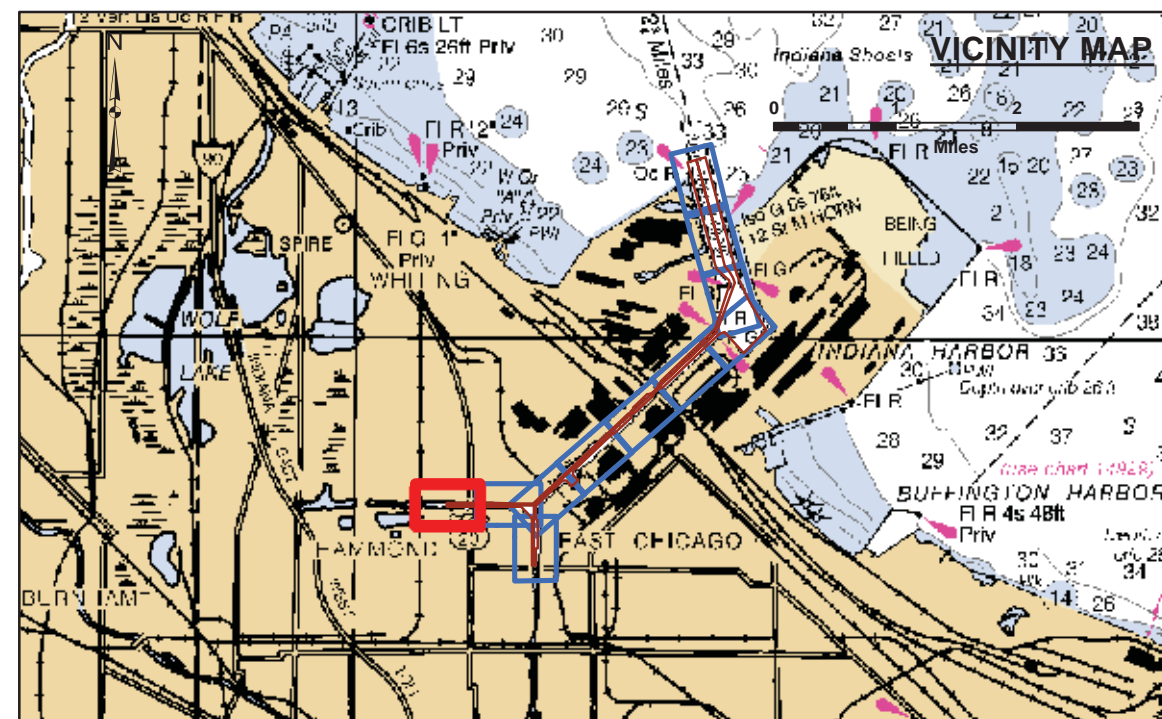
2,331,000



2,842,000

2,843,000

2,844,000

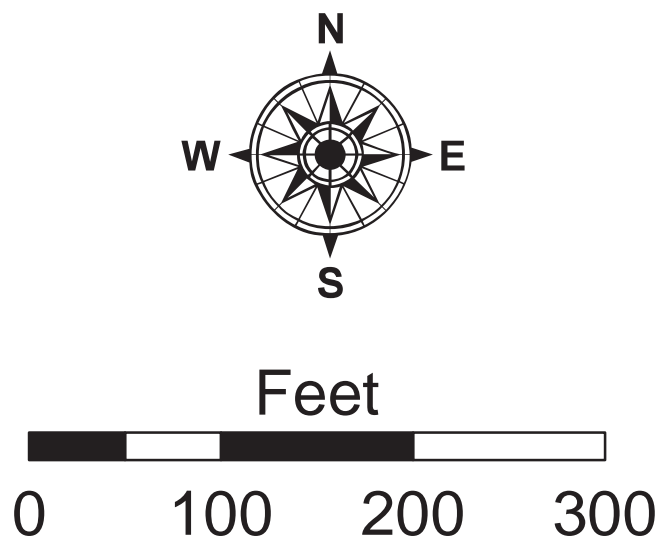


**LEGEND**

- Channel Centerline
- Channel Boundaries

- 4+ Feet Above Authorized Channel Depth
- 2-4 Feet Above Authorized Channel Depth
- 0-2 Feet Above Authorized Channel Depth
- 0-2 Feet Below Authorized Channel Depth
- 2-4 Feet Below Authorized Channel Depth
- 4+ Feet Below Authorized Channel Depth

UNLESS OTHERWISE NOTED PROJECT DEPTH IS 29.0' APPROACH CHANNEL 28.0'



**NOTES:**

THE SOUNDINGS INDICATED HEREON REPRESENT THE MINIMUM DEPTH SOUNDING THE 10 FOOT BY 10 FOOT AREA CENTERED AROUND THE TEXT. MINIMUM DEPTH DATA IS PRODUCED FOR STRIKE/SHOAL REMOVAL OPERATIONS AND NOTICES TO NAVIGATION INTERESTS.

ELEVATIONS AND SOUNDING DEPTHS ARE REFERRED TO INTERNATIONAL GREAT LAKES DATUM 1985 (IGLD 85). LOW WATER DATUM ZERO IS 577.5 FEET ABOVE MEAN WATER LEVEL AT POINT RIMOUSKI QUEBEC. WATER LEVEL READINGS ARE FROM AN AUTOMATED GAUGE LOCATED AT WAUKEGAN HARBOR, ILLINOIS. DEPTHS ARE MEASURED USING AN RZSONIC 2024 MULTIBEAM SONAR.

HORIZONTAL POSITIONING IS DETERMINED USING THE DIFFERENTIAL GLOBAL POSITIONING SYSTEM (DGPS). THE DIFFERENTIAL CORRECTIONS ARE PROVIDED BY U.S. COAST GUARD DIFFERENTIAL BROADCAST STATIONS. SIGNAL STRENGTH IS USED AS THE DETERMINING FACTOR IN DIFFERENTIAL SELECTION. THE DGPS RECEIVER IS MANUFACTURED BY APPLANIX MARINE POSIMV VER 4.0

GRID COORDINATES ARE BASED ON THE INDIANA STATE PLANE COORDINATE SYSTEM, LAMBERT PROJECTION, INDIANA WEST (1302), NORTH AMERICAN DATUM 1983 (NAD83). ALL COORDINATES SHOWN ARE IN U.S. SURVEY FEET.

THE INFORMATION DEPICTED ON THIS MAP REPRESENTS THE RESULTS OF SURVEYS MADE ON AUG 24, 2015 AND CAN ONLY BE CONSIDERED AS INDICATING THE GENERAL CONDITIONS PRESENT AT THE TIME.



**DISCLAIMER:** The United States Government furnishes these data and the recipient accepts them with the express understanding that the data are not to be used for any purpose other than that for which they were originally intended. As such, it is only valid for its intended use, content, time and place. The recipient shall be responsible for the accuracy, completeness, or implied concerning the accuracy, completeness, reliability, usability, or availability for any particular purpose of the data. The recipient shall be responsible for the accuracy, completeness, or implied concerning the accuracy, completeness, reliability, usability, or availability for any particular purpose of the data. The recipient shall be responsible for the accuracy, completeness, or implied concerning the accuracy, completeness, reliability, usability, or availability for any particular purpose of the data. The recipient shall be responsible for the accuracy, completeness, or implied concerning the accuracy, completeness, reliability, usability, or availability for any particular purpose of the data.

U.S. ARMY ENGINEERS CORPS OF ENGINEERS CHICAGO, ILLINOIS	Surveyed by: Eric Schmidt	Aug. 24, 2015
	Reviewed by:	
Path: G:\hydro\products\MMDLCL_01_INH_POST.mxd		

CHICAGO DISTRICT  
INDIANA HARBOR, INDIANA  
FEDERAL NAVIGATION CHANNEL

POST SURVEY

Sheet  
Reference  
Number  
10 of 11